

FLOOR MOUNTED SECURITY STOOL

SECURITY FURNITURE

#US-STLF / FLOOR MOUNTED SECURITY STOOL



features and benefits

- Ultra vandal resistant
- Anti-ligature design
- Fully welded, heavy duty construction
- Easy to maintain and clean
- Stainless steel floor mounting plate for bolting to the floor for additional safety
- Suits detention facilities

about

The *BRITEX Floor Mounted Security Stool* is used in detention facilities and holding cells, due to its robust and secure design. The solid stainless steel construction and ligature proof design makes it an ideal choice for use in harsh environments. Featuring a stainless steel floor mounting plate for bolting to the floor, the stool is ultra vandal resistant, reducing the risk of tampering to allow for added safety.

sample spec. text

BRITEX grade 304 S.S. Floor Mounted Security Stool - *457L x 305W O/A.* - Product Code US-STLF

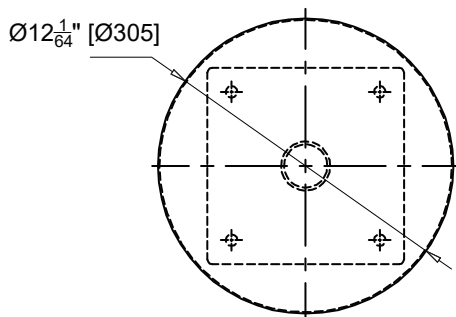
*RED TEXT may denote a **variable** where one option only is to be selected, a **nominal dimension** that needs to be specified, or an **optional feature** that can be removed if not required. Please refer to the back of this page for additional specification details and options.

VISIT [BRITEXUSA.COM](https://www.britexusa.com) TO DOWNLOAD THE MOST CURRENT PRODUCT LITERATURE.

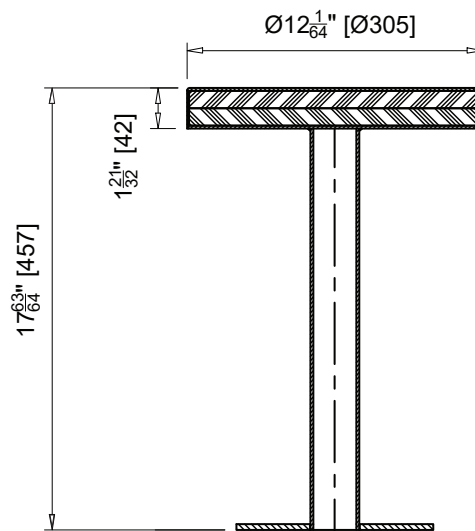
FLOOR MOUNTED SECURITY STOOL

PRODUCT CODE

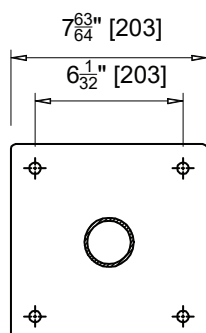
US-STLF



MODEL US-OSGI Plan



MODEL US-OSGI Front Elevation



MODEL US-OSGI Base Details

specifying
guide

When specifying this product please include:

- Product **Name** and **Code**
- Product **Dimensions**

options

- Custom dimensions

VISIT BRITEXUSA.COM TO DOWNLOAD THE MOST CURRENT PRODUCT LITERATURE.