

ADA ACCESSIBLE HAND BASIN



features and benefits

- Grade 304 SS (1.2mm -16/18 gauge)
- Optimal vandal resistance
- Fully welded, seamless construction
- Completely concealed plumbing
- P trap installation
- 1 1/4" inch waste outlet supplied
- Stylish, modern design
- Vandal resistant access panel
- ADA compliant
- 7 litre bowl capacity
- Suits parks and recreation, schools, sporting clubs and bars

about

The *BRITEX Stainless Steel Disabled Hand Basin* is a vandal resistant fixture that is designed to conform to ADA standards - and is ideal for use in parks and recreation, night clubs and pavilions. Fabricated from heavy duty stainless steel, and a 40mm waste outlet.

sample spec. text

BRITEX S.S. Disabled Hand Basin - 440 x 470 x 380D O/A. Supplied with, access panel, mounting bracket and 1 1/4" inch waste outlet. ADA compliant - Product Code US-HBDA

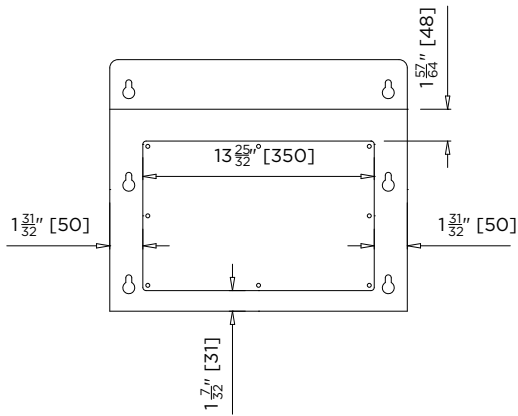
*RED TEXT may denote a **variable** where one option only is to be selected, a **nominal dimension** that needs to be specified, or an **optional feature** that can be removed if not required. Please refer to the back of this page for additional specification details and options.

VISIT BRITEXUSA.COM TO DOWNLOAD THE MOST CURRENT PRODUCT LITERATURE.

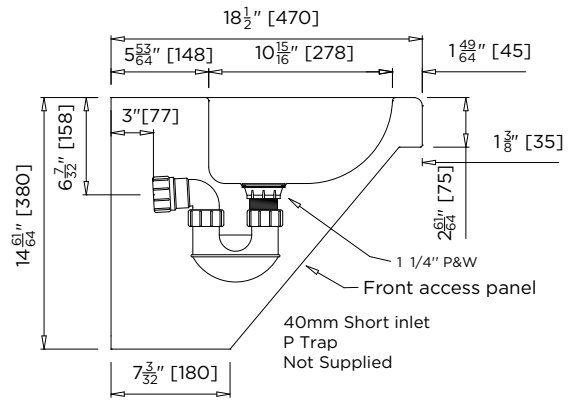
DISABLED HAND BASIN

PRODUCT CODE

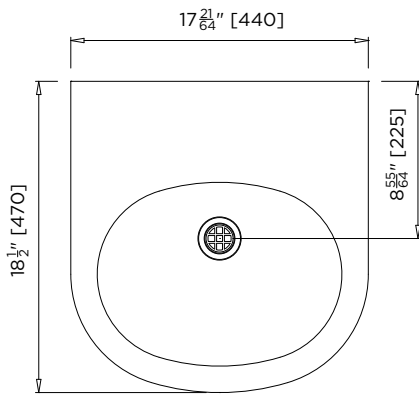
US-HBDA



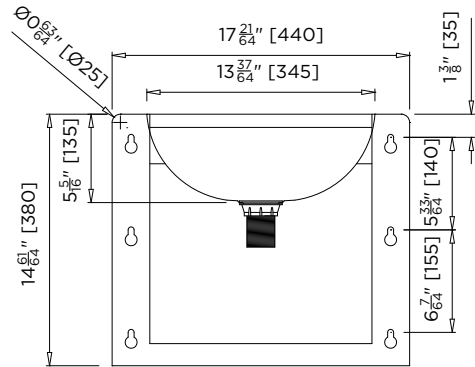
MODEL US-HBDA Front Elevation



MODEL US-HBDA Side Elevation



MODEL US-HBDA Plan



MODEL US-HBDA Rear Elevation

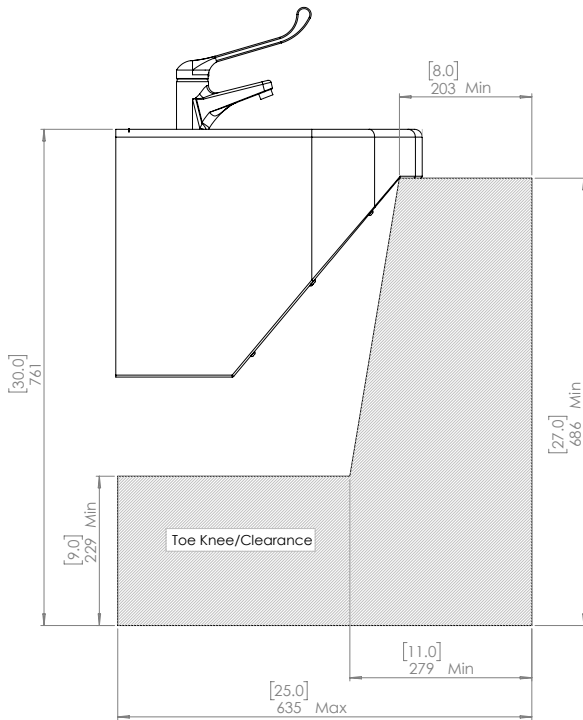
VISIT BRITEXUSA.COM TO DOWNLOAD THE MOST CURRENT PRODUCT LITERATURE.

DISABLED HAND BASIN

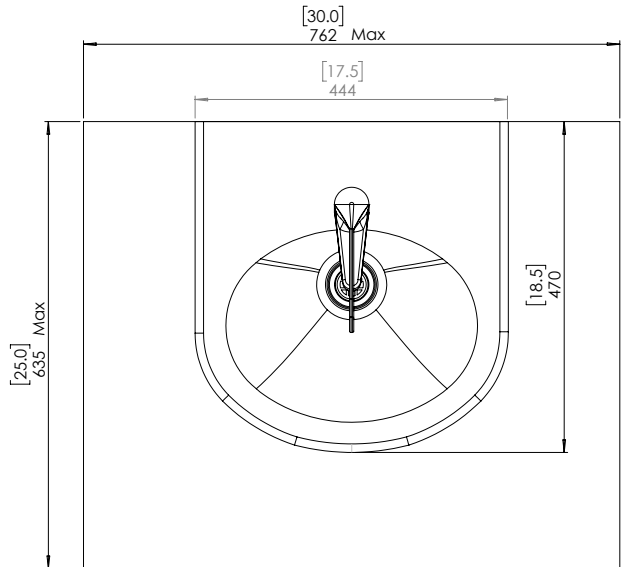
PRODUCT CODE

US-HBDA

HAND BASINS



MODEL US-HBDA Side Elevation



MODEL US-HBDA Plan

The final compliance to the applicable requirements of ICC A117.1-2017 is dependent upon the final installation.

- The clear floor space shall be 48 inches minimum in length and 30 inches minimum in width.
- A clear floor space complying with Section 305.3 positioned for forward approach, shall be provided. Knee and toe clearance complying with Section 306 shall be provided. The dip of the overflow shall not be considered in determining knee and toe clearance.
- Toe Clearance - COMPLIED*
- Knee Clearance - COMPLIED*

When specifying this product please include:

- Product **Name** and **Code**
- Product **Dimensions**

specifying
guide

options

- Tapholes
- Access Panel

VISIT BRITEXUSA.COM TO DOWNLOAD THE MOST CURRENT PRODUCT LITERATURE.