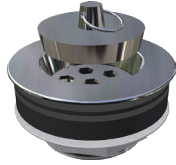
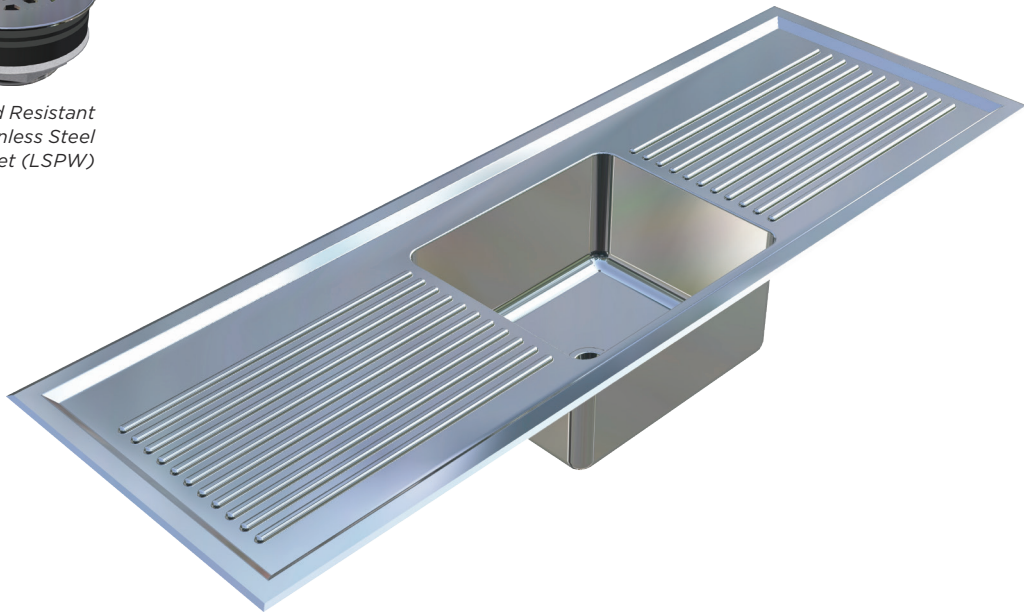


SINGLE CENTRE BOWL LABORATORY SINK



*Optional Acid Resistant
Grade 316 Stainless Steel
Waste Outlet (LSPW)*



*Image shows Model US-LSSCB-1200
1200mm long Single Centre Bowl Laboratory Sink*

features and benefits

- Standard and custom sizes available
- Single bowl, double drainer
- Optional S.S. waste
- Will not crack or chip
- Corrugated drainer
- Radius internal bowl corners
- 50mm centre waste
- Grade 316 acid resistant S.S. (1.2mm -16/18 gauge)
- Optional grade 304 S.S. for domestic applications
- Optional flat drainer boards
- Suits school science rooms and laboratories

about

BRITEX Stainless Steel Single Centre Bowl Lab Sinks are fully custom fabricated using 1.2mm grade 316 acid resistant stainless steel. They are supplied with corrugated drainers and optional grade 316 stainless steel waste outlet. They can also be made in grade 304 stainless steel and used in domestic or light commercial projects. Radiused internal bowl corners ensure cleaning is easy and tap holes are supplied to suit specified tapware. Ideal for school science rooms and laboratories.

sample spec. text

*BRITEX grade 316 Stainless Steel Lab Sink - 1200L x 500W O/A. Single centre bowl to be **REB3**. Complete with corrugated drainers and 50mm grade 316 S.S. waste outlet - Product Code US-LSSCB-1200*

**RED TEXT may denote a variable where one option only is to be selected, a nominal dimension that needs to be specified, or an optional feature that can be removed if not required. Please refer to the back of this page for additional specification details and options.*

VISIT BRITEXUSA.COM TO DOWNLOAD THE MOST CURRENT PRODUCT LITERATURE.

SINGLE CENTRE BOWL LABORATORY SINK

PRODUCT CODE

US-LSSCB

HOW TO SPECIFY: Single Centre Bowl Laboratory Sink

Standard Size Sink Codes

All supplied with space for tap holes behind bowl, REB3 bowls and 50mm grade 316 S.S. waste outlets
US-LSSCB-1200 - 1200L x 500W. Centre bowl
US-LSSCB-1500 - 1500L x 500W. Centre bowl

Custom Size Sink Code

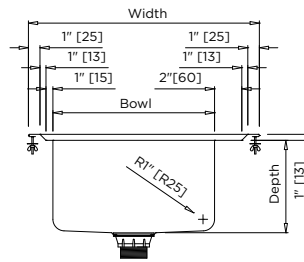
US-LSSCB - Fully custom made. Specify sink length, width and bowl size.

NB: If sinks require integrated tap holes behind bowl, add 150mm to bowl size to calculate overall sink width.

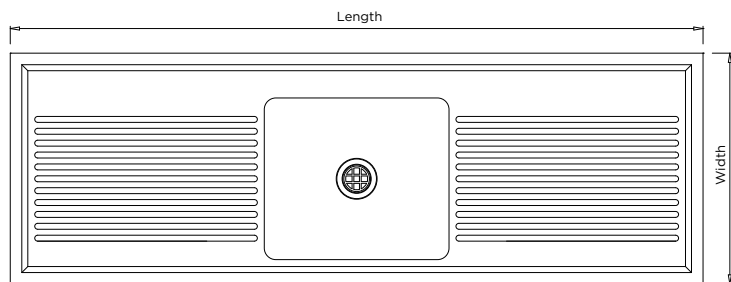
E.g. If bowl is 450 Long x 350 Wide, overall sink width will be 500mm. If no tap holes are required, add only 100mm.

Standard REB (Raw Edge Bowl) Sizes:

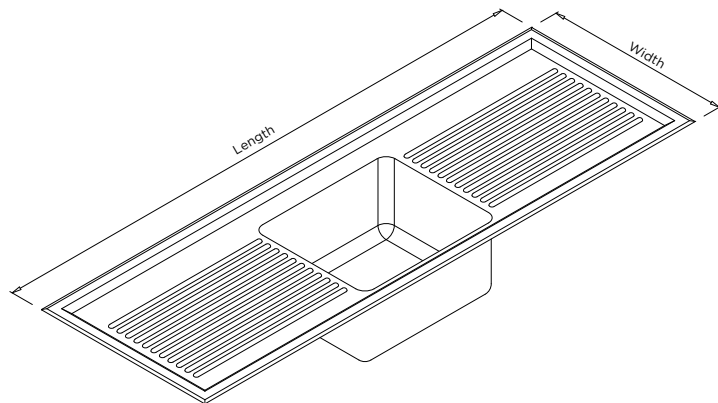
REB1	400L x 400W x 300 D
REB2	450L x 450W x 300 D
REB3	450L x 350W x 250 D
REB4	500L x 500W x 300 D
REB5	600L x 450W x 300 D
REB6	380L x 330W x 150 D



MODEL US-LSSCB Section



MODEL US-LSSCB Plan



MODEL US-LSSCB Isometric View

specifying
guide

When specifying this product please include:

- Product **Name** and **Code**
- Product **Features**
- Product **Dimensions**
- **Waste Outlet Type** (polypropylene or stainless steel)

options

- Grade 316 S.S. Waste
- Custom sizes
- Laboratory grade 316 or standard grade 304 S.S. sink
- Flat drainer section (no corrugations)

VISIT BRITEXUSA.COM TO DOWNLOAD THE MOST CURRENT PRODUCT LITERATURE.