

SECURITY COMBINATION UNIT

CENTURION PAN

BRITEK SECURITY RANGE



Model US-SCUC90 90 degree angle pan

Model US-SCUC35 35 degree angle pan

Images show optional toilet roll holder and optional security tapware.

features and benefits

- 14-gauge type 304 stainless steel (1.2mm -16/18 gauge)
- Consistently specified for maximum security facilities
- No ligature points
- Contraband-proof
- Concealed fixings
- Optional pan angle (90 or 35 degree)
- Space-saving design
- Optional integral toilet roll holder
- Security tapware optional
- Ligature proof basin waste outlet
- 4.5/3 litre flushing compatible
- Suits detention facilities, pubs and parks and recreation

about

BRITEK Stainless Steel Security Combination Units are consistently selected by specifiers for prisons, holding cells and detention facilities that require optimal vandal resistance. They incorporate a fully welded stainless steel toilet pan and wash basin. The toilet pan has a contraband-proof flushing rim and one piece pressed bowl that provides water efficient flushing – 4.5/3 litre. A ligature-proof security waste is supplied with the basin and optional extras include security tapware, access panel and toilet pan flushing mechanism. Numerous fixing points are provided for fixing to the floor and rear wall.

sample spec. text

BRITEK S.S. Centurion Security Combination Unit - Incorporating security pan with 14mm safety radius front edge and oval basin with safety radius front edge and 40mm security waste outlet. Supplied complete with security tapware and integral recessed toilet roll holder. Pan to be at 90/35 degree angle - Product Code US-SCUC

*RED TEXT may denote a variable where one option only is to be selected, a nominal dimension that needs to be specified, or an optional feature that can be removed if not required. Please refer to the back of this page for additional specification details and options.

VISIT BRITEXUSA.COM TO DOWNLOAD THE MOST CURRENT PRODUCT LITERATURE.

#US-SCUC / SECURITY COMBINATION UNIT

SECURITY COMBINATION UNIT

CENTURION PAN

PRODUCT CODE

US-SCUC

HOW TO SPECIFY: Security Combination Unit

Sample Specification Code

A B C D E
US-SCUC - 35 - R - S - TW-SEC-01

= Security Combination Unit Centurion Pan, 35 degree model, Right orientation, S Trap, complete with Security Set Tapware

Specification Key

A = Product Code

B = Pan Angle

35 : 35 Degrees
90 : 90 Degrees

C = Pan Orientation

L : Left Hand Side
R : Right Hand Side

D = Trap Type

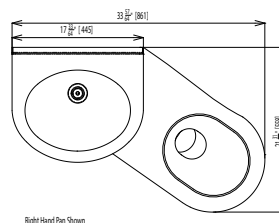
S : S Trap
P : P Trap

E = Tapware (optional)

Suggested Tapware Options:

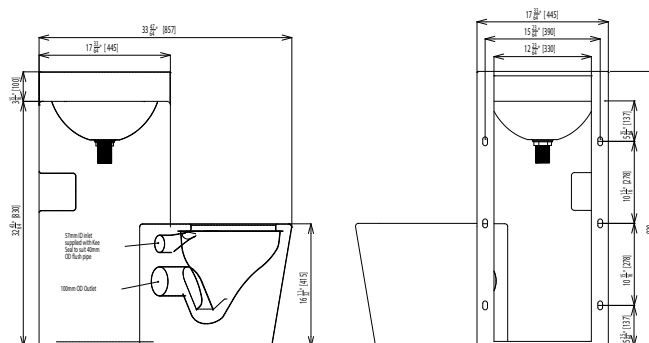


TW-SEC-01
Security Set
(Cold Only)

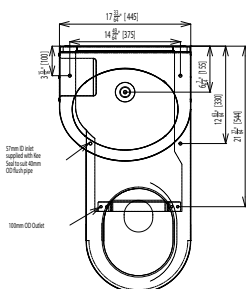


Right Hand Pan Shown

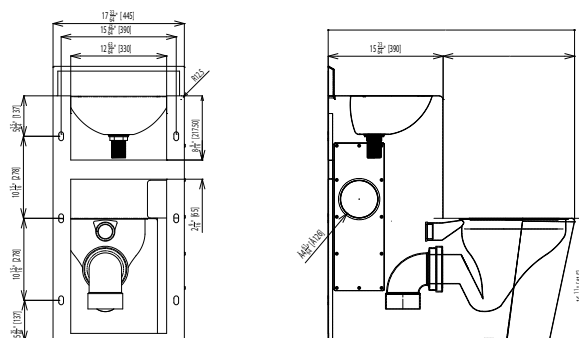
MODEL US-SCUC35 Plan (Right Hand Orientation)



MODEL US-SCUC35 Rear Elevation and Side Elevation



MODEL US-SCUC90 Plan (Right Hand Orientation)



MODEL US-SCUC90 Rear Elevation and Side Elevation

When specifying this product please include:

- Product Name and Code
- Product Features / Options
- P or S Trap

specifying guide

options

- Integral Toilet Roll Holder
- Security Tapware - TW-SEC-01
- Left hand access panel

VISIT BRITECHUSA.COM TO DOWNLOAD THE MOST CURRENT PRODUCT LITERATURE.