



features and benefits

- Economical trough with hob for tapware
- Commercial grade 304 S.S. (1.2mm -16/18 gauge)
- Fully welded construction
- Made to custom lengths
- 50mm waste & wall brackets supplied
- Left or right hand waste position
- Suited to workshops, public amenities and portable buildings

about

The *BRITEK Stainless Steel Pattern Trough No. 4* is an economical, square cornered trough that incorporates a rear hob for mounting hand wash taps. Suitable for use in light commercial projects and public amenities. Made from 1.2mm grade 304 stainless steel and possessing square external corners it is available in custom lengths with either left or right hand waste position. Troughs are supplied with heavy duty wall brackets and front legs are available if additional support is required.

sample spec. text

BRITEK 1.2mm grade 304 S.S. Pattern No.4 Trough - XXXXL x 390W x 150D. Complete with 80mm rear hob, left/right hand waste outlet and wall mounting brackets - Product Code US-TP4

*RED TEXT may denote a **variable** where one option only is to be selected, a **nominal dimension** that needs to be specified, or an **optional feature** that can be removed if not required. Please refer to the back of this page for additional specification details and options.

VISIT BRITEXUSA.COM TO DOWNLOAD THE MOST CURRENT PRODUCT LITERATURE.

PATTERN TROUGH NO.4

PRODUCT CODE

US-TP4

HOW TO SPECIFY: Pattern Trough No.4

Sample Specification Code

A B C D
US-TP4 - 1500 - WB - R

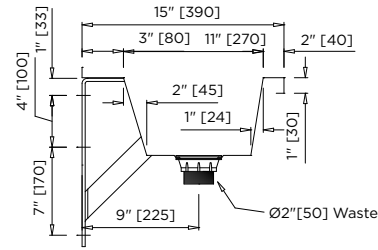
= Pattern Trough No. 4, 1500mm long, Brackets only, Right Hand Waste

Specification Key

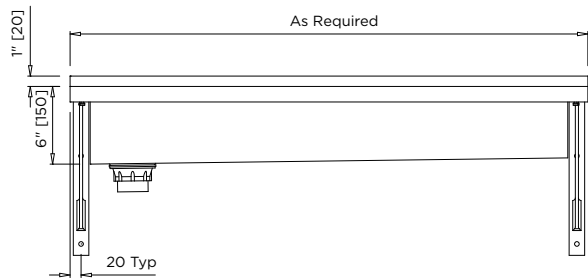
A = Product Code **D = Waste Outlet Position**
B = Trough Length (mm) **L : Left Hand Waste**
C = Support Options **R : Right Hand Waste**
 WB : Brackets only
 BL : Brackets and Legs

Common Trough and Tap Combinations:

| | | |
|-----------------|-----------------|-----------------|
| 900mm - 2 taps | 1500mm - 3 taps | 2400mm - 6 taps |
| 1200mm - 3 taps | 1800mm - 4 taps | 3000mm - 8 taps |

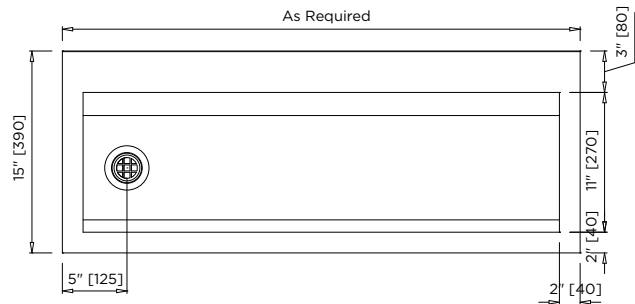


MODEL US-TP4 Section



Troughs over 2000mm long are supplied with a centre support bracket

MODEL US-TP4 Front Elevation



MODEL US-TP4 Plan

specifying
guide

When specifying this product please include:

- Product Name and Code
- Product Dimensions
- Position of Waste Outlet (left/right)

options

- Tap holes
- Support legs
- Custom trough dimensions
- Left or right hand waste

VISIT BRITEXUSA.COM TO DOWNLOAD THE MOST CURRENT PRODUCT LITERATURE.