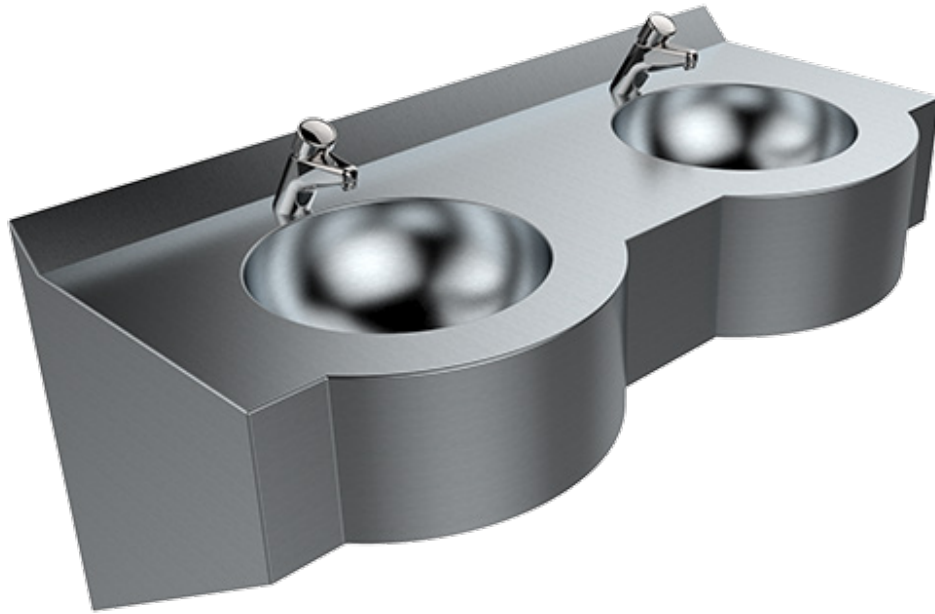


# CURVELINE VANITY MULTI BASIN

3.05

HAND BASINS

#US-HBCM / CURVELINE VANITY MULTI BASIN



*\*Tapware shown for indicative purposes only.*

## features and benefits

- Supplied in custom lengths
- Incorporates multiple hand basins
- Highly vandal resistant
- Fully welded, seamless construction
- P trap installation
- Completely concealed plumbing
- 40mm waste outlets supplied
- Grade 304 SS (1.2mm -16/18 gauge)
- Vandal resistant access panels
- Heavy duty, concealed brackets
- 50mm angled rear upstand
- Ideal for parks and recreation, night clubs, schools and bars

## about

The *BRITEX Curveline Vanity Multi Basin* is ideal for use in schools, parks and recreation, night clubs and pavilions where several patrons may require use of the basin at once. All basins are made to order and fabricated to the custom length required. Manufactured from heavy duty commercial grade 304 stainless steel, it incorporates a secure access panel and 40mm waste outlet.

## sample spec. text

*BRITEX S.S. Curveline Vanity Multi Basin - XXXXL x 550W with X No. integral 300mm dia. bowls and concealed fixings. Supplied in satin finish, mounting brackets and removable access panels - Product Code US-HBCM*

\*RED TEXT may denote a **variable** where one option only is to be selected, a **nominal dimension** that needs to be specified, or an **optional feature** that can be removed if not required. Please refer to the back of this page for additional specification details and options.

VISIT [BRITEXUSA.COM](http://BRITEXUSA.COM) TO DOWNLOAD THE MOST CURRENT PRODUCT LITERATURE.

# CURVELINE VANITY MULTI BASIN

PRODUCT CODE

## US-HBCM

### HOW TO SPECIFY: Curveline Vanity Multi Basin

#### Sample Specification Code

**A**      **B**      **C**  
**US-HBCM - 1200 - 2**

= Curveline Vanity Multi Basin, 1200mm Long with 2 Bowls

#### Specification Key

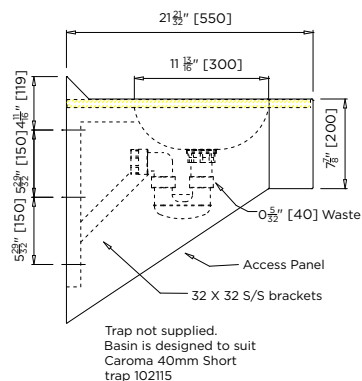
A = Product Code

C = No. of Bowls

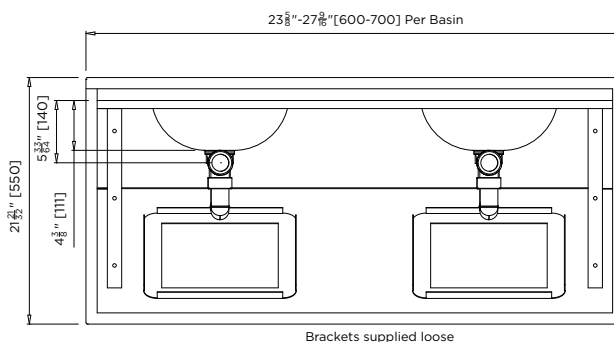
B = Basin Length (mm)

#### Standard Basin Sizes:

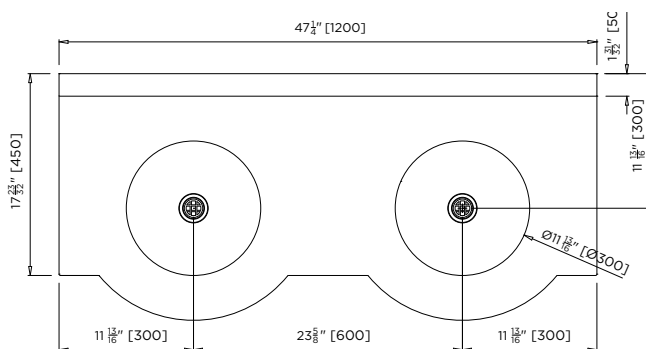
1200mm - 2 bowls	2400mm - 4 bowls	3600mm - 6 bowls
1800mm - 3 bowls	3000mm - 5 bowls	4200mm - 7 bowls



MODEL US-HBCM Side Elevation



MODEL US-HBCM Rear Elevation



MODEL US-HBCM Plan

specifying  
guide

When specifying this product please include:

- Product **Name** and **Code**
- No. of **Bowls**
- Product **Dimensions**

options

- Tap holes

VISIT [BRITEXUSA.COM](http://BRITEXUSA.COM) TO DOWNLOAD THE MOST CURRENT PRODUCT LITERATURE.