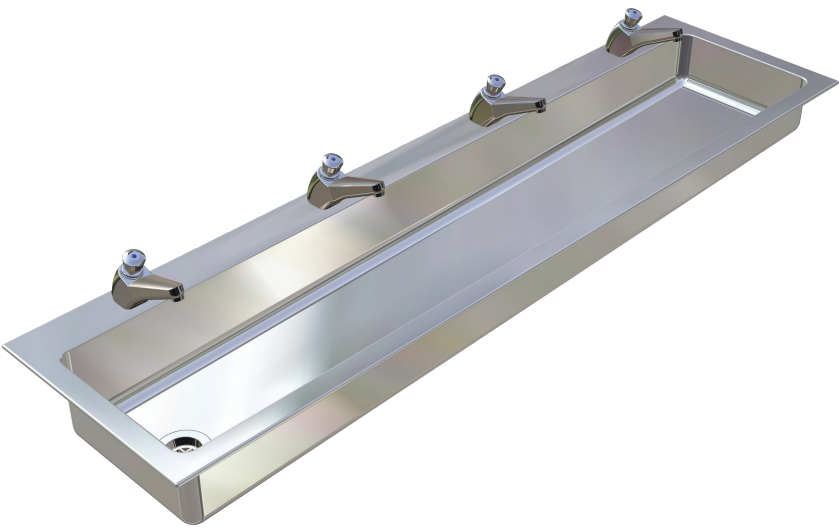


PWD FLAT RIM TROUGH

4.03

TROUGHS

#US-TFR / PWD FLAT RIM TROUGH



**Tapware shown for indicative purposes only.*

features and benefits

- Made to custom lengths
- Grade 304 or 316 acid resistant S.S.
- Radius internal corners - easy cleaning
- Extended rear hob for mounting tapware
- Fully welded construction
- 50mm waste supplied
- Supplied with fixing studs and clips
- Left or right hand waste position

about

The *BRITEX Stainless Steel PWD Flat Rim Trough* is a versatile fixture that can be used in a large range of applications. Tapware can be mounted on the extra wide hob at the back of the trough and internal radius corners ensure that the trough is easy to clean. All flat rim troughs are manufactured to custom lengths, can be supplied in grade 304 or acid resistant grade 316 stainless steel and waste outlets can be at either the left or right hand end.

sample spec. text

BRITEX 1.2mm grade *304/316* S.S. Flat Rim Trough - *XXXX*mm Long x 450mm Wide x 150mm Deep O/A. Complete with *X* No. taps, 50mm *left/right* hand waste outlet and radius internal bowl corners - Product Code US-TFR-*X*

*RED TEXT may denote a **variable** where one option only is to be selected, a **nominal dimension** that needs to be specified, or an **optional feature** that can be removed if not required. Please refer to the back of this page for additional specification details and options.

VISIT [BRITEXUSA.COM](https://www.britexusa.com) TO DOWNLOAD THE MOST CURRENT PRODUCT LITERATURE.

PWD FLAT RIM TROUGH

PRODUCT CODE

US-TFR

HOW TO SPECIFY: PWD Flat Rim Trough

Sample Specification Code

A **B** **C**
US-TFR - 1800 - L

= PWD Flat Rim Trough, 1800mm long, Left Hand Waste

Specification Key

A = Product Code

C = Waste Outlet Position

B = Trough Length (mm)

L : Left Hand Waste

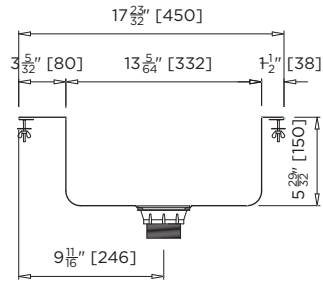
R : Right Hand Waste

Common Trough and Tap Combinations:

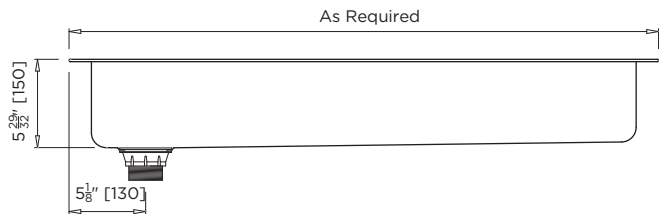
900mm - 2 taps
 1200mm - 3 taps

1500mm - 3 taps
 1800mm - 4 taps

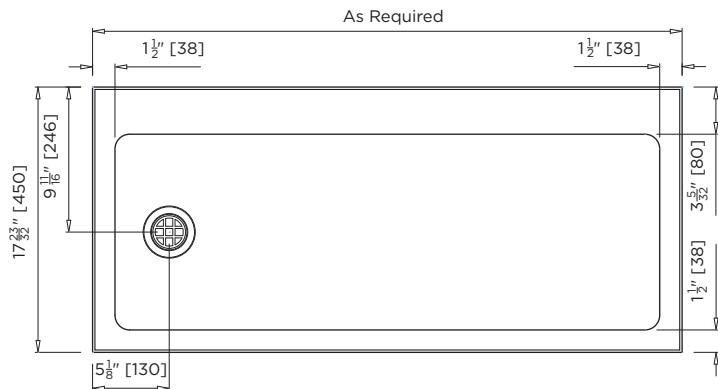
2400mm - 6 taps
 3000mm - 8 taps



MODEL US-TFR Section



MODEL US-TFR Front Elevation



MODEL US-TFR Plan

When specifying this product please include:

- Product **Name** and **Code**
- **Grade** of Stainless Steel
- Product **Length**
- Position of **Waste Outlet** (left/right)

specifying
guide

options

- Grade 304 or 316 S.S.
- Custom trough dimensions
- Tap holes
- Left or right hand waste outlet
- Blade upstand to rear of trough

VISIT BRITEXUSA.COM TO DOWNLOAD THE MOST CURRENT PRODUCT LITERATURE.