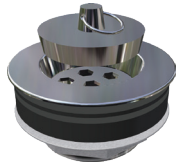
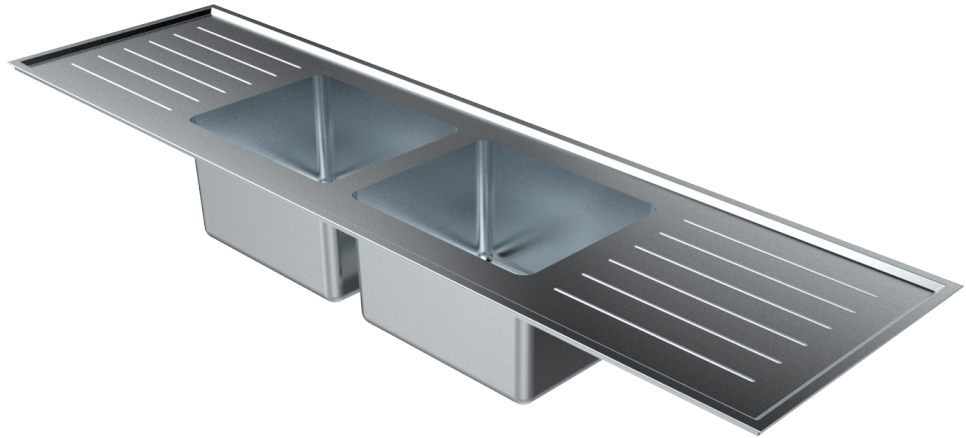


# 1800mm TWIN CENTRE BOWL

## UNIVERSAL LABORATORY SINK



*Optional Acid Resistant  
Grade 316 Stainless Steel  
Waste Outlet (LSPW)*



Scan QR code  
to view online



### features and benefits

- Standard Stocked Sizes
- Universal - for easy installation
- Twin centre bowls, double drainer
- Optional WaterMark certified S.S. waste
- Will not crack or chip
- Corrugated drainers
- Radius internal bowl corners
- Grade 316 acid resistant S.S. (1.2mm -16/18 gauge)
- 50mm centre waste
- 70mm hob to incorporate tapware
- Optional tapholes to suit specified tapware
- Suits school science rooms and laboratories

### about

*BRITEX Stainless Steel Twin Centre Bowl Universal Lab Sinks* are fabricated using 1.2mm grade 316 acid resistant stainless steel. Incorporating a uniquely Britex innovation, the Universal Sink Range possess 70mm hobs on either side of the bowl which allow for easy installation. They are supplied with 60mm spaced corrugated drainers and optional WaterMark certified grade 316 stainless steel waste outlet (LSPW). The Integrated twin bowls are 400L x 320W x 250D and radiused internal bowl corners ensure cleaning is easy. Tap holes can be supplied to suit specified tapware. Ideal for school science rooms and laboratories.

### sample spec. text

*BRITEX grade 316 S.S. 1800mm Twin Centre Bowl Universal Lab Sink - 1800L x 500W O/A. Bowl size 400L x 320W x 250D. Complete with corrugated drainers and 50mm WaterMark certified grade 316 S.S. waste outlet (LSPW) and XXXX tapware - Product Code US-LSTCB-S18*

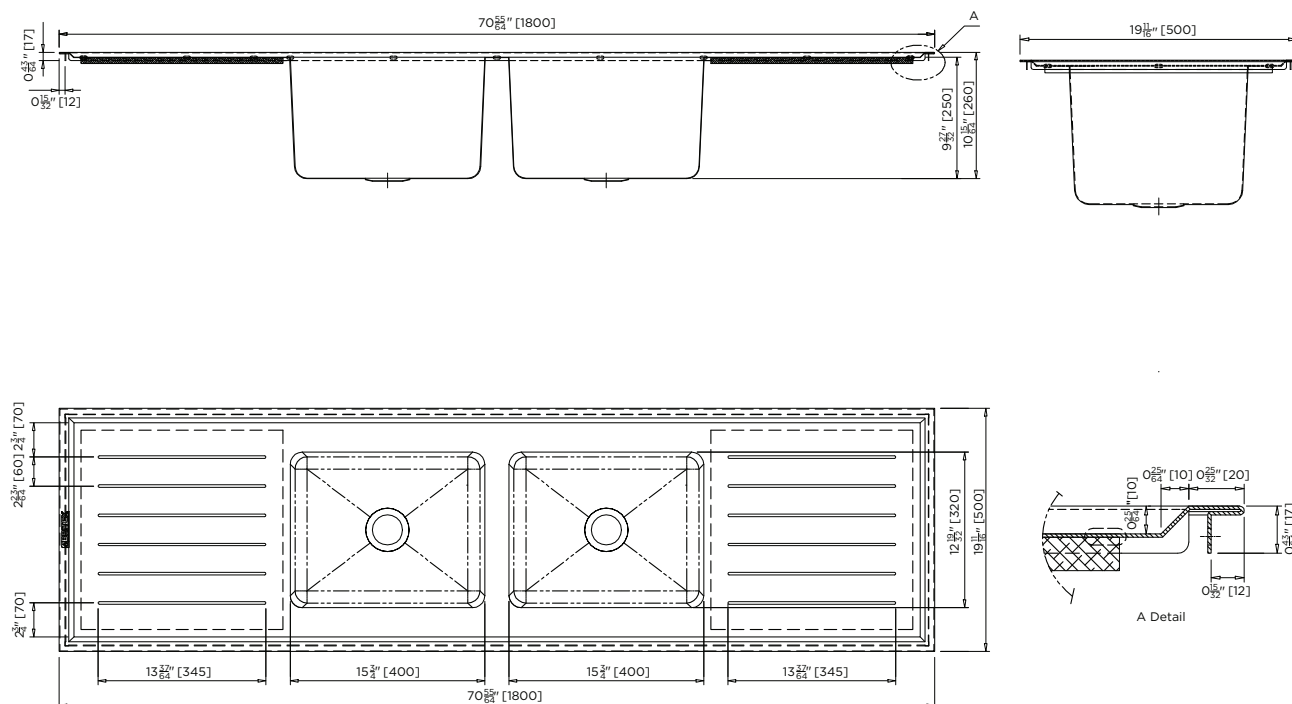
\*RED TEXT may denote a **variable** where one option only is to be selected, a **nominal dimension** that needs to be specified, or an **optional feature** that can be removed if not required. Please refer to the back of this page for additional specification details and options.

VISIT [BRITEXUSA.COM](http://BRITEXUSA.COM) TO DOWNLOAD THE MOST CURRENT PRODUCT LITERATURE.

# TWIN CENTRE BOWL

## UNIVERSAL LABORATORY SINK

PRODUCT CODE

**US-LSTCB-S18**specifying  
guide

- Product **Name** and **Code**
- Product **Features**
- Product **Dimensions**
- **Waste Outlet Type**  
(polypropylene or stainless steel)
- **Tapware** details (if required)

options

- Grade 316 S.S. Waste - LSPW: p 7.07
- Tapholes to suit
- Laboratory tapware

VISIT [BRITEXUSA.COM](http://BRITEXUSA.COM) TO DOWNLOAD THE MOST CURRENT PRODUCT LITERATURE.

Last Revised 2019