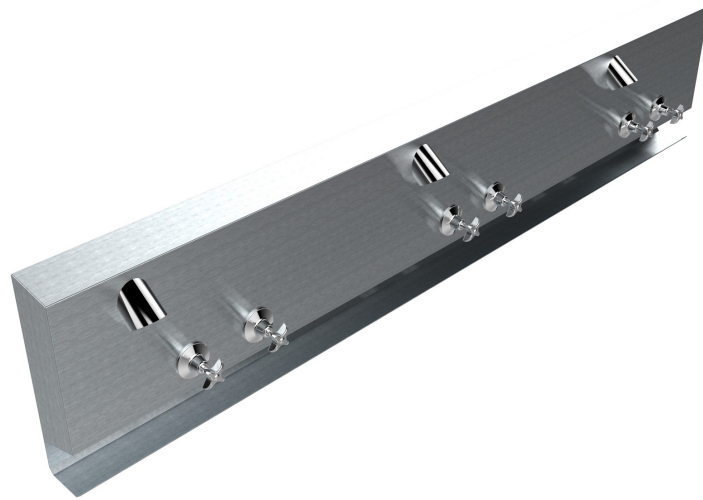


# SHOWER PANEL



## features and benefits

- Available in custom sizes
- Integrated Soap Shelf
- Commercial grade 304 stainless steel
- Choice of anti-vandal tapware options
- Heavy duty construction
- Easy to install
- Water efficient tapware
- Suits sports clubs, caravan parks, ablution blocks and public amenities

## about

The *BRITEX Stainless Steel Shower Panel* is available in custom or standard lengths with vandal resistant, water efficient hot and cold tapware. Fabricated from heavy duty grade 304 satin finish stainless steel, shower panels incorporate an integral soap shelf and are ideally suited to sports facility change rooms, public amenities, caravan parks and ablution blocks.

## sample spec. text

*BRITEX S.S. Shower Panel - XXXXmm L x XXXmm H x 100mm D. Grade 304 stainless steel. Supplied complete with integral soap shelf, concealed mounting bracket and X No. Sets of Hot and Cold WaterMark certified vandal resistant tapware - Product Code US-BSP*

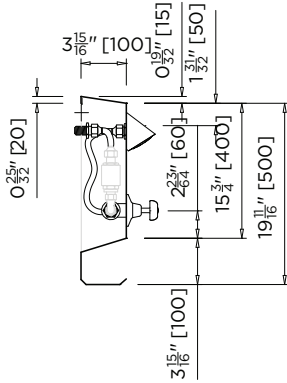
\*RED TEXT may denote a **variable** where one option only is to be selected, a **nominal dimension** that needs to be specified, or an **optional feature** that can be removed if not required. Please refer to the back of this page for additional specification details and options.

VISIT [BRITEXUSA.COM](http://BRITEXUSA.COM) TO DOWNLOAD THE MOST CURRENT PRODUCT LITERATURE.

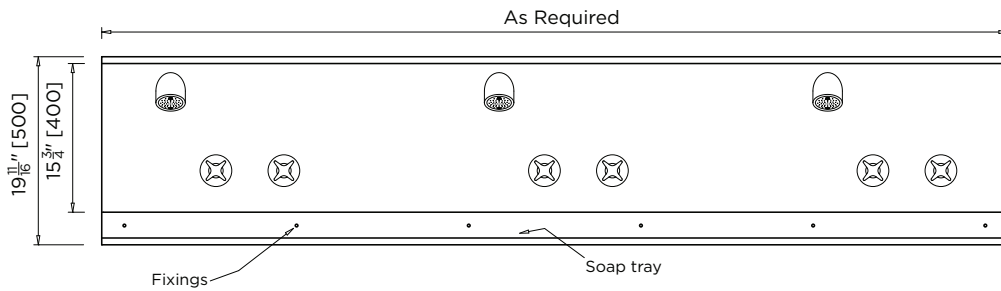
# SHOWER PANEL

PRODUCT CODE

**US-BSP**



**MODEL BSP** Side Elevation



**MODEL BSP** Front Elevation



- Product **Name** and **Code**
- Product **Features**
- No. of **Shower Heads**

- Security tapware
- Custom lengths

VISIT [BRITEXUSA.COM](http://BRITEXUSA.COM) TO DOWNLOAD THE MOST CURRENT PRODUCT LITERATURE.