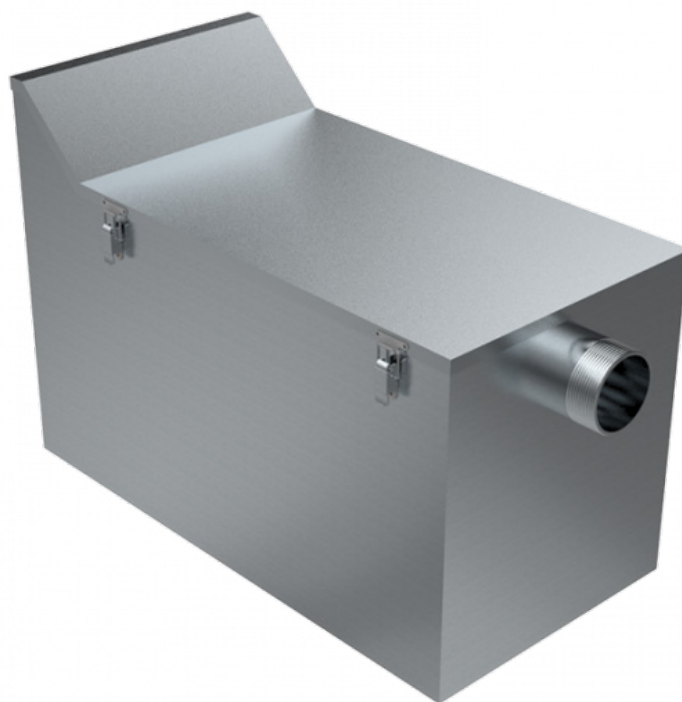


PLASTER & CLAY ARRESTOR

TANKS & DRAINAGE

#US-OSPC / PLASTER & CLAY ARRESTOR



features and benefits

- Prevents solid waste entering plumbing
- Easy to clean removable capture box
- Lid secured by quick release clips
- Airtight lid sealed by internal gasket
- 44 litre capacity
- Installed above ground
- Custom sizes available
- Compatible with BRITEX Clay and Ablution Troughs (TCA/TCAI)
- Used in education, medical and art projects

about

The *BRITEX Plaster & Clay Arrestor* is manufactured from 1.2mm grade 304 stainless steel. This unit is generally used in medical facilities, art rooms and studios or wherever solids are combined with liquids. This tank controls solid particles by filtering solids through a solids capture box, baffles and perforated sheet filter screens and the lid is secured by quick release clips. Available in custom and standard sizes as required.

sample spec. text

BRITEX grade 304 S.S. Plaster and Clay Arrestor - 594L x 312W x 424H O/A. 44 Litre capacity. Lid to be removable with quick release clips. Complete with removable solids capture box and outlet skimmer box - Product Code US-OSPC

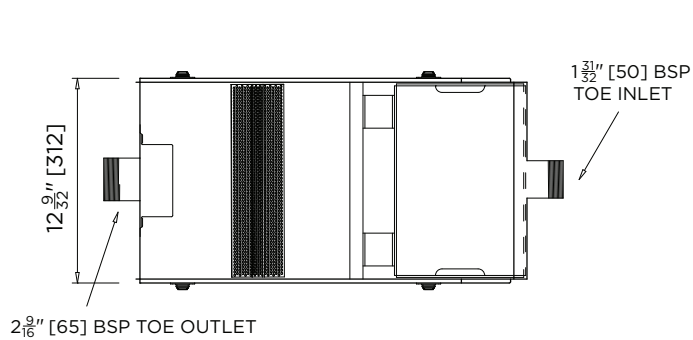
*RED TEXT may denote a variable where one option only is to be selected, a nominal dimension that needs to be specified, or an optional feature that can be removed if not required. Please refer to the back of this page for additional specification details and options.

VISIT [BRITEXUSA.COM](https://www.britexusa.com) TO DOWNLOAD THE MOST CURRENT PRODUCT LITERATURE.

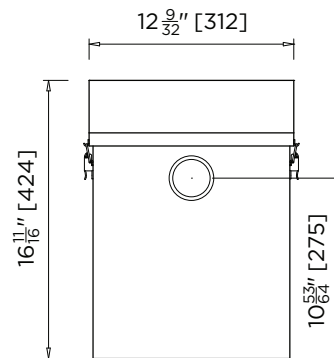
PLASTER & CLAY ARRESTOR

PRODUCT CODE

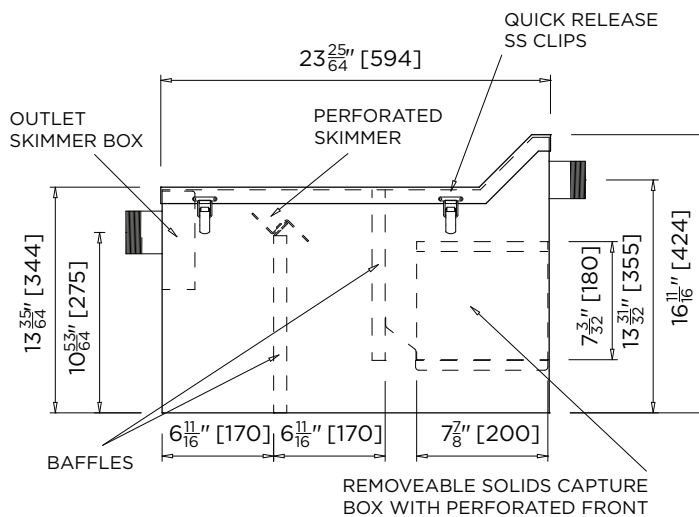
OSPC



MODEL US-OSPC Plan



MODEL US-OSPC Front Elevation



MODEL US-OSPC Side Elevation

specifying
guide

When specifying this product please include:

- Product Name and Code
- Product Dimensions
- Product Features

options

- Grade 304 or 316 stainless steel
- Custom capacity and dimensions
- Base with castors

VISIT BRITEXUSA.COM TO DOWNLOAD THE MOST CURRENT PRODUCT LITERATURE.