

# WALL MOUNTED SWING STOOL

SECURITY FURNITURE

#US-STL-WMS / WALL MOUNTED SWING STOOL



## features and benefits

- Standard and custom sizes available
- Smooth surface for comfortable seating
- Stainless steel floor mounting plates for bolting for additional safety
- Ultra vandal resistant
- Anti-ligature design
- Fully welded, heavy duty construction

## about

The *BRITEX Wall Mounted Swing Stool* is used in detention facilities and holding cells, due to its heavy duty design. The swing arm is constructed of 3/8" steel plate and is welded to a 10 gauge seat top backing plate and the swing apparatus. With a 14 gauge stainless steel top, 10 gauge back plate, 10 gauge steel support and 1/4" thick mounting plate, the solid stainless steel construction and ligature proof design makes it perfectly suited for use in environments where security is of upmost importance. The stainless steel wall mounting plate for bolting to the wall makes the stool ultra vandal resistant and reduces the risk of tampering.

## sample spec. text

*BRITEX S.S. Wall Mounted Swing Stool - Product Code US-STL-WMS*

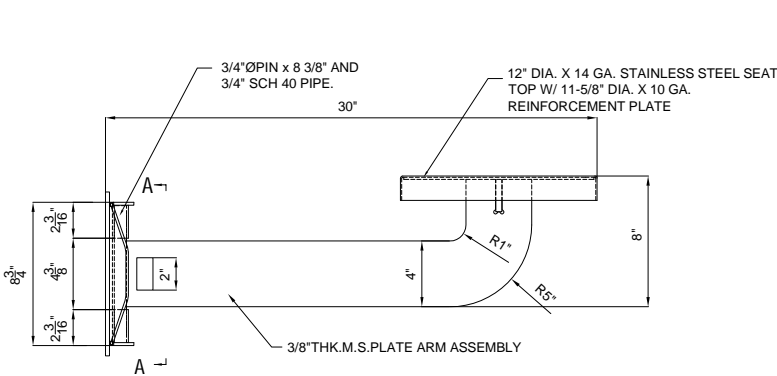
\*RED TEXT may denote a **variable** where one option only is to be selected, a **nominal dimension** that needs to be specified, or an **optional feature** that can be removed if not required. Please refer to the back of this page for additional specification details and options.

VISIT [BRITEXUSA.COM](https://www.britexusa.com) TO DOWNLOAD THE MOST CURRENT PRODUCT LITERATURE.

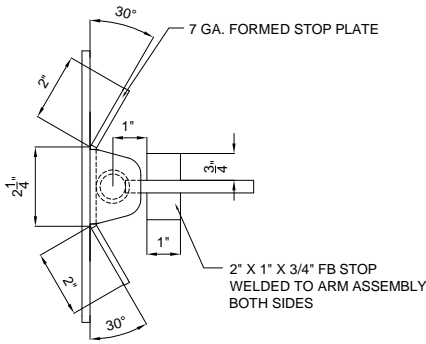
# WALL MOUNTED SWING STOOL

PRODUCT CODE

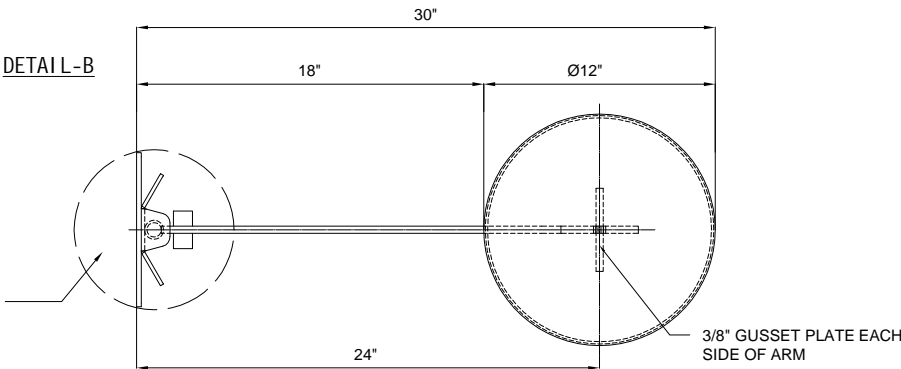
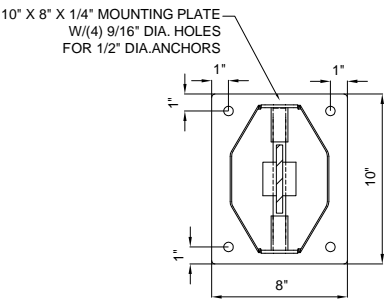
## US-STL-WMS



MODEL US-STL-WMS Front Elevation



DETAIL L-B



MODEL US-STL-WMS Plan Elevation

specifying  
guide

- Product **Name** and **Code**
- Product **Dimensions**

options

- Available in custom sizes

VISIT [BRITEXUSA.COM](http://BRITEXUSA.COM) TO DOWNLOAD THE MOST CURRENT PRODUCT LITERATURE.

Last Revised Jan 2024