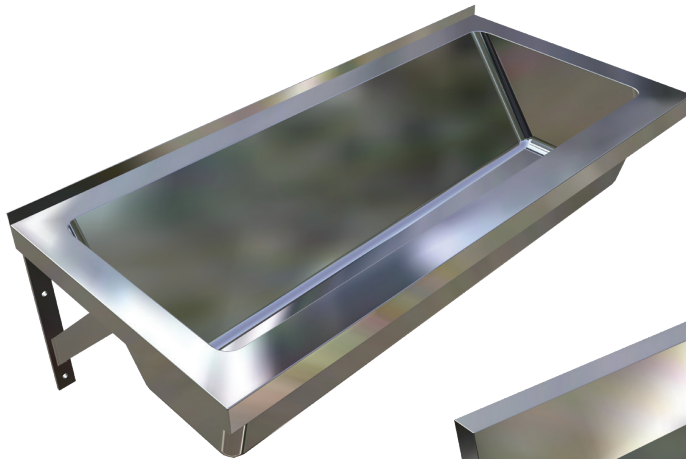
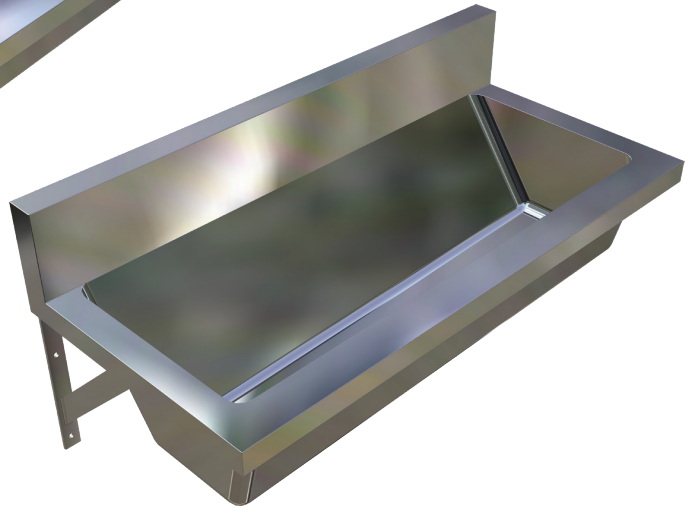


# ABLUTION TROUGH

TROUGHS



*Images shows Model US-TABL  
Tile lip to Rear*



*Image shows Model US-TABL-U  
Boxed Upstand to Rear*

## features and benefits

- Grade 304 S.S. (1.2mm -16/18 gauge)
- Available pre-plumbed with tapware
- Available with or without upstand
- Standard and custom lengths
- Upstand model conceals tapware connections
- 50mm waste & wall brackets supplied
- Radius internal corners - easy cleaning
- Left or right hand waste position
- Ideal for schools, public amenities and pavilions

## about

The *BRITEX Stainless Steel Ablution Trough* also known as the Pattern No. 5 trough is a versatile wash trough with rounded internal corners that prevent build up of grime and ensure cleaning is easy. A 50mm hob is provided in the splashback of the US-TABL-U so that plumbing can be concealed behind the trough without needing to make penetrations in the wall behind. Made from 1.2mm type 304 stainless steel and possessing square external corners it is available in custom lengths with either left or right hand waste position.

## sample spec. text

BRITEX 1.2mm grade 304 S.S. Ablution Trough - XXXXL x 485W x 215D. Complete with left/right hand 50mm waste outlet and wall mounting brackets - Product Code US-TABL

\*RED TEXT may denote a **variable** where one option only is to be selected, a **nominal dimension** that needs to be specified, or an **optional feature** that can be removed if not required. Please refer to the back of this page for additional specification details and options.

VISIT [BRITEXUSA.COM](http://BRITEXUSA.COM) TO DOWNLOAD THE MOST CURRENT PRODUCT LITERATURE.

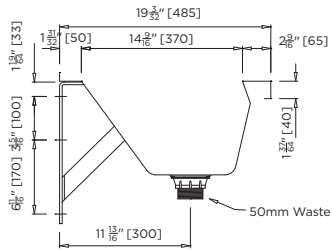
#US-TABL / ABLUTION TROUGH

# ABLUTION TROUGH

PRODUCT CODE

## US-TABL

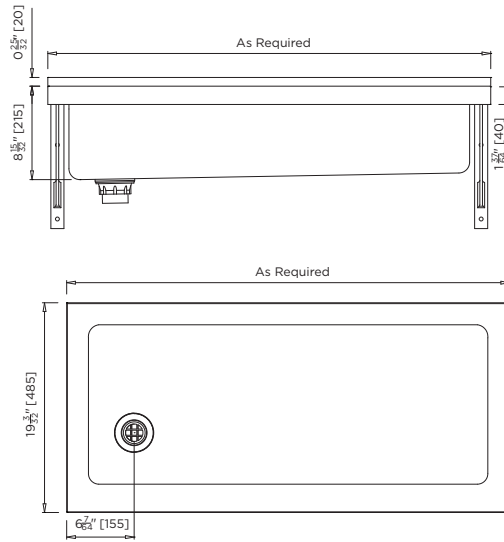
Standard Ablution Trough



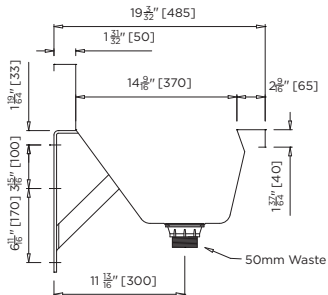
MODEL US-TABL Section

## US-TABL-U

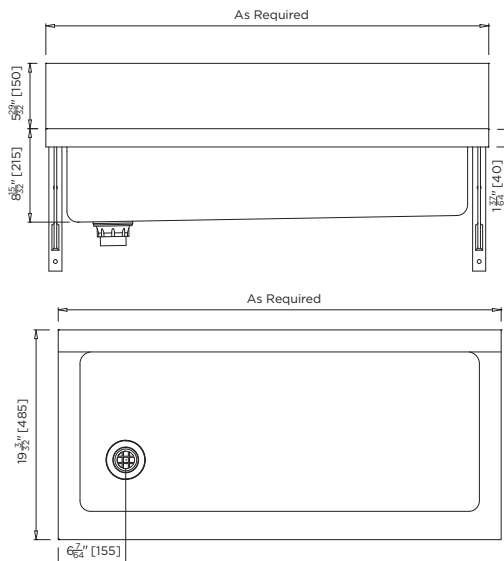
Ablution Trough with boxed rear upstand



MODEL US-TABL Front Elevation and Plan



MODEL US-TABL-U Section



MODEL US-TABL-U Front Elevation and Plan

*When specifying this product please include:*

- Product **Name** and **Code**
- Product **Dimensions**
- **Tapware** details (if required)
- Position of **Waste Outlet** (left/right)

specifying  
guide

options

- Standard Sizes (1200, 1500, 1800, 2400mm)
- Tapware
- Tap holes
- Support legs
- Custom trough dimensions
- Left or right hand waste outlet

VISIT [BRITEXUSA.COM](http://BRITEXUSA.COM) TO DOWNLOAD THE MOST CURRENT PRODUCT LITERATURE.