



# BRITEX Universal Lab Sinks

Project Guide | [britex.com.au](http://britex.com.au)

# One Sink. Two Ways.

## 70mm Tapware Hob on both sides

*Incorporating Britex  
Unique Universal Sink  
Design the Lab sinks can  
be used for both Left  
Hand and Right Hand  
applications.*

## 316 Stainless Steel

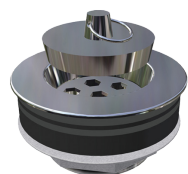
*Manufactured in 316 S.S this  
increased corrosive resistant  
grade of stainless makes this  
range perfect for laboratory  
and medical applications  
as well as schools and  
cleaning areas where heavy  
duty chemicals are exposed.*

## 50mm Centre Bowl Waste

## Bowl Size

*All Bowl Sizes on our Universal Lab Sinks are standard  
400mm L x 320mm W x 250mm D*

## Accessories



**LSPW**  
50mm Acid Resistant  
Stainless Steel Waste



**TW-LBSET-09**  
Hob Mounted Cam  
Action Lab Set 09



**TW-LBSET-01**  
Hob Mounted Cam  
Action Lab Set 01

*\*More tapware options available [britex.com.au](http://britex.com.au)*

# Stocked Configurations

Standard Sizes and Configurations Stocked in our Warehouse - Ready to Go!

## Single End Bowl

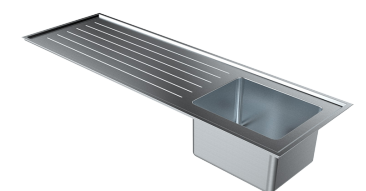
*\*Click on the images below for technical information*



**LSSEB-S09**  
900mm Single End  
Universal Laboratory Sink

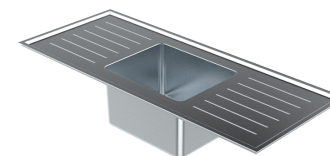


**LSSEB-S12**  
1200mm Single End  
Universal Laboratory Sink

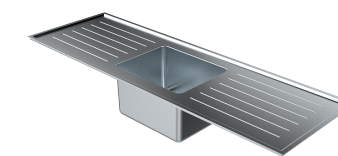


**LSSEB-S15**  
1500mm Single End  
Universal Laboratory Sink

## Single Centre Bowl

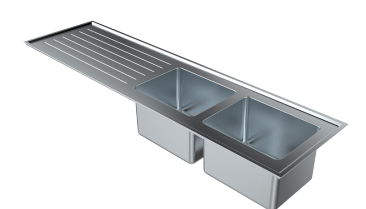


**LSSCB-S12**  
1200mm Single Center  
Universal Laboratory Sink



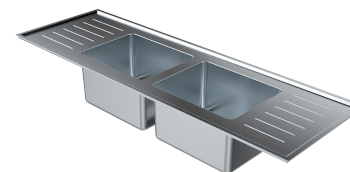
**LSSCB-S15**  
1500mm Single Center  
Universal Laboratory Sink

## Twin End Bowl

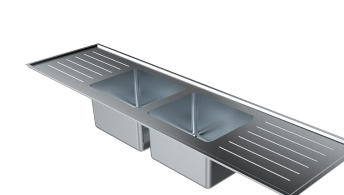


**LSTEB-S15**  
1500mm Twin End  
Universal Laboratory Sink

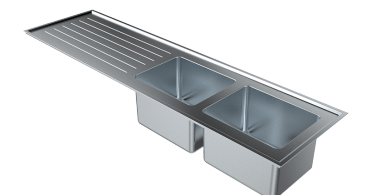
## Twin Centre Bowl



**LSTCB-S15**  
1500mm Twin Center  
Universal Laboratory Sink



**LSTCB-S18**  
1800mm Twin Center  
Universal Laboratory Sink



**LSTEB-S18**  
1800mm Twin End  
Universal Laboratory Sink

