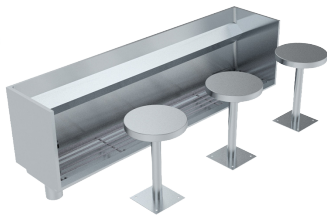


Wudu Foot Wash Trough



US-TWUDU

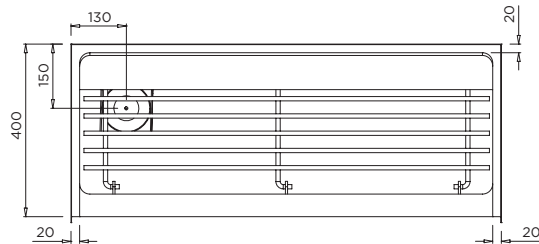


Product Info:

- Designed for foot washing / wudu
- Used in Islamic cultural buildings
- Integrated foot rest and hinged grate
- Manufactured to custom lengths
- Available with tapware (see Tapware section)
- Optional heavy duty stainless steel stools

To order this item please advise:

- Recessed or Floor Mounted
- Overall length
- Waste position: Left or Right
- Installation type: between walls or freestanding
- No. of stools (if required)

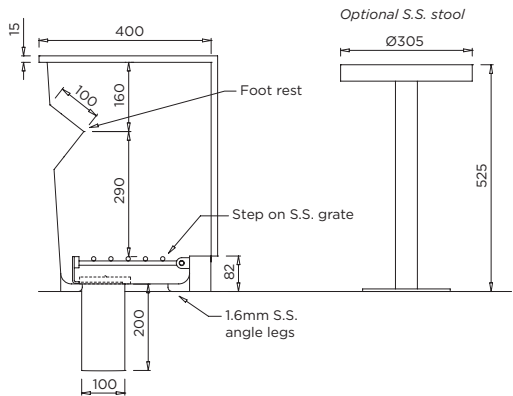
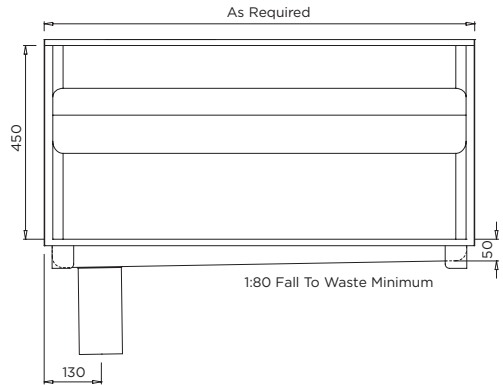


INSTALLATION NOTES

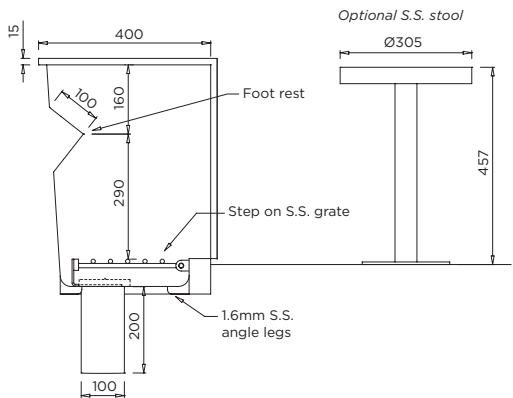
1) A pliable mortar bed (slurry) is recommended to support trough tray and prevent flexing. 2) If trough is to be recessed into the floor, we suggest a cut out of 440mm Wide x 90mm Deep x Trough Length. 101mm (OD) tube dropper outlet provides optimal drainage. 3) For troughs installed between walls, tile edges are supplied to all sides for sheeting over before finishing walls. 4) Freestanding troughs are supplied without any tile edges.



Due to ongoing research and our commitment to product development, details are subject to change without notice. Details accurate at time of print



TWUDU Floor Mounted Model



TWUDU Recessed Model

Please refer to britex.com.au for the most current product information. Allow +/- 5mm tolerance for dimensions and setouts shown in product literature.

Last Revised 2022