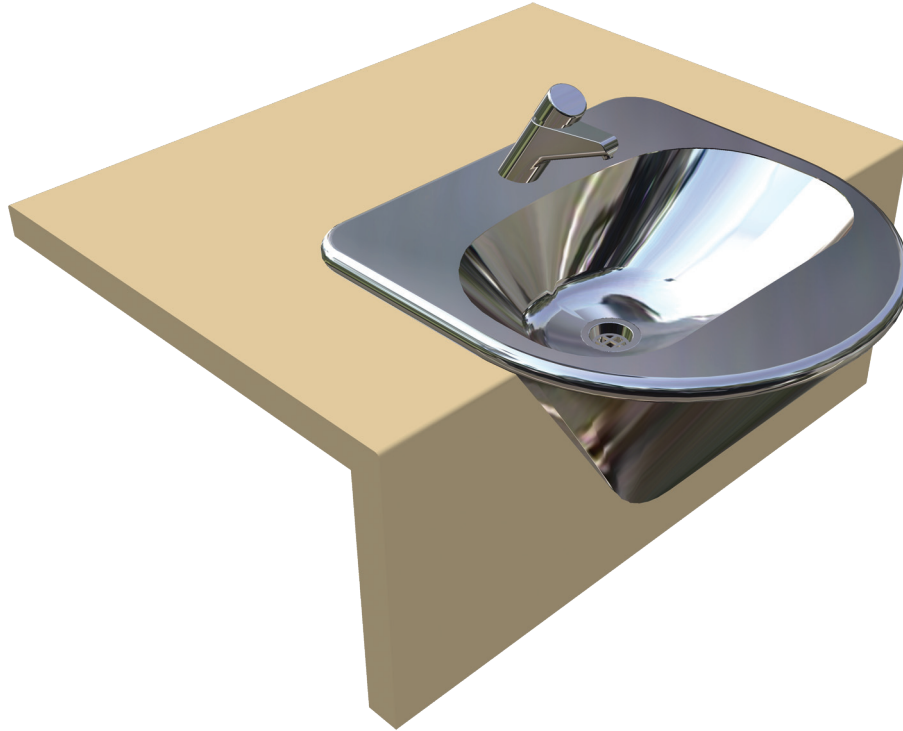


SEMI RECESSED VANITY BASIN

6.14

HAND BASINS

#HBSR / SEMI RECESSED VANITY BASIN



Scan QR code
to view online



*Image shows Model HBSR-TW-9201
Semi Recessed Vanity Basin with Deluxe Timed Flow Tap
(benchtop by others)*

features and benefits

- Highly vandal resistant
- Space saving fixture
- Grade 304 satin S.S.
- 40mm waste outlet supplied
- Radius safety front edge
- 1, 2 or 3 tap holes
- Choice of tapware styles

about

The **BRITEX Semi Recessed Vanity Basin** combines space savings with vandal resistance. Fabricated from 1.2mm stainless steel, it provides a great deal of vandal resistance by incorporating concealed fixings and security shroud without compromising on aesthetics. It can be used either in new projects or to replace damaged Vitreous China Basins. Supplied complete with 40mm waste outlet and tap holes as required. Can be supplied with anti-vandal timed flow pillar tap, sensor tap or security tapware for maximum vandal resistance.

sample spec. text

*BRITEX S.S. Semi Recessed Vanity Basin - 500 x 501 x 308 O/A. Bowl to be 140mm deep Supplied complete with radius front edge, integral shroud, **XXXX tapware** and 40mm waste outlet - Product Code HBSR-TW-XXXX*

NB Please refer to reverse page for tapware and basin options

***RED TEXT** may denote a **variable** where one option only is to be selected, a **nominal dimension** that needs to be specified, or an **optional feature** that can be removed if not required. Please refer to the back of this page for additional specification details and options.

VISIT BRITEX.COM.AU TO DOWNLOAD BIM FILES, CAD DRAWINGS AND THE MOST CURRENT PRODUCT LITERATURE.



MELBOURNE
Britex Place, Mirra Crt
Bundoora VIC 3083
t (03) 9466 9000
f (03) 9466 9044

SYDNEY
16 Northumberland Drv
Taren Point NSW 2229
t (02) 9531 2100
f (02) 9531 2800

PERTH
Unit 1/8 Principal Link
Malaga WA 6090
t (08) 9249 5464
f (08) 9248 6893

BRISBANE
19 Manilla St
East Brisbane QLD 4169
t (07) 3363 2400
f (07) 3363 2444

ADELAIDE
The Britex Group
SA State Office
t 1300 764 744
f 1300 784 306

britex.com.au | info@britex.com.au | A.B.N 83 004 309 737

SEMI RECESSED VANITY BASIN

PRODUCT CODE

HBSR Basin only

HOW TO SPECIFY: Semi Recessed Vanity Basin

Sample Specification Code

A **B**
HBSR - TW-9201

= Semi Recessed Vanity Basin with Deluxe Timed Flow Pillar Tap

Specification Key

A = Product Code

B = Tapware - if required
 (see below for suggested tapware options)

Suggested Tapware Options:

(see Tapware Section: 11 for complete range of options)



TW-9201
Deluxe Timed Flow Pillar Tap



TW-9101
Eco Timed Flow Pillar Tap



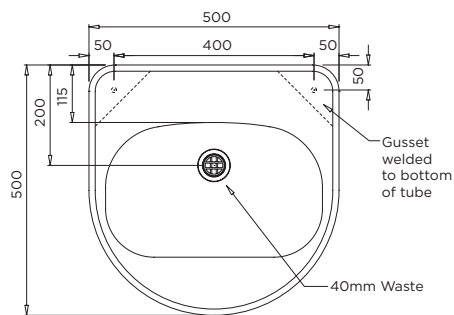
TW-9110
Euro Basin Mounted Sensor Tap



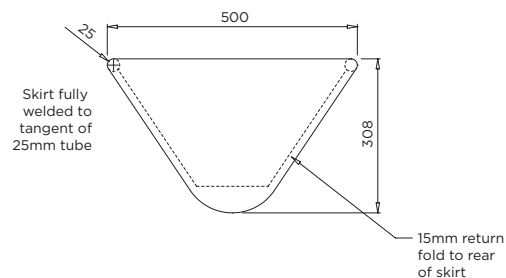
TW-9103
Timed Flow Lever Pillar Tap



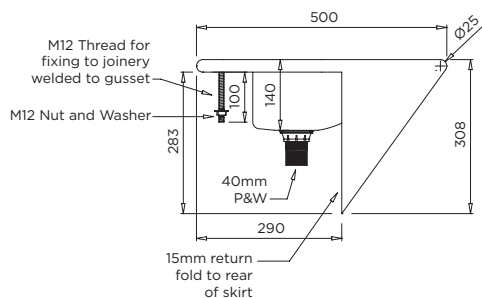
TW-MIX-01
Basin Mounted Flick Mixer



MODEL HBSR Plan



MODEL HBSR Front Elevation



MODEL HBSR Side Elevation

When specifying this product please include:

- Product **Name** and **Code**
- Product **Dimensions**
- **Tapware** details (if required)

specifying guide

options

- Tap holes
- Tapware - see Tapware Section: 11



VISIT BRITEX.COM.AU TO DOWNLOAD BIM FILES, CAD DRAWINGS AND THE MOST CURRENT PRODUCT LITERATURE.



Due to ongoing research and our commitment to product development, details are subject to change without notice.
 Details accurate at time of print.
 Please refer to britex.com.au for the most current product information.
 Allow +/- 5mm tolerance for dimensions and setouts shown in product literature.

britex.com.au | info@britex.com.au | A.B.N 83 004 309 737

