



Image shows Model TP8-F  
Wall Mounted Trough  
with front fascia



Image shows Model TP8-I  
Inset Trough

## features and benefits

- Inset and wall mounted models
- 480mm or 600mm wide
- Made to custom lengths
- Radius internal trough corners for easy cleaning
- Rear hob for mounting tapware
- Left or right hand waste position
- 50mm waste supplied
- Optional Pre-Plumbed tapware
- Commercial grade 304 S.S.
- Ideal for schools, workshops and public amenities

## about

The **BRITEX Stainless Steel Art Trough** is a versatile trough that can be used for a large range of applications, commonly in education projects. Inset and fascia style models are available for bench and wall mounting respectively. Made from 1.2mm grade 304 stainless steel and possessing rounded corners it is easy to clean and is available in custom lengths with either left or right hand waste position. Wall mounted models are supplied with heavy duty wall brackets and front legs are available if additional support is required.

## sample spec. text

BRITEX 1.2mm grade 304 S.S. *Inset/Fascia* Art Trough - XXXXL x 480/600W x 150D complete with left/right hand 50mm waste outlet - Code TP8- X

\*RED TEXT may denote a **variable** where one option only is to be selected, a **nominal dimension** that needs to be specified, or an **optional feature** that can be removed if not required. Please refer to the back of this page for additional specification details and options.

VISIT [BRITEX.COM.AU](http://BRITEX.COM.AU) TO DOWNLOAD BIM FILES, CAD DRAWINGS AND THE MOST CURRENT PRODUCT LITERATURE.

# ART TROUGH

PRODUCT CODE

## TP8-F

Fascia style (480mm wide)

## TP8-I

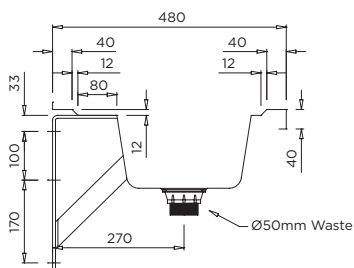
Inset style (480mm wide)

## TP8-FW

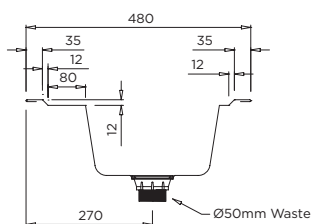
Fascia style (600mm wide)

## TP8-IW

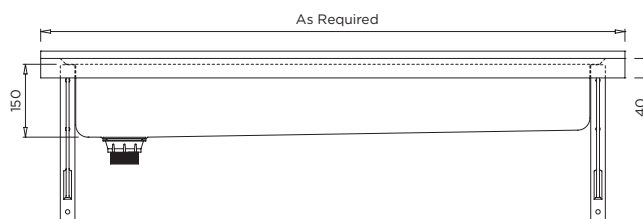
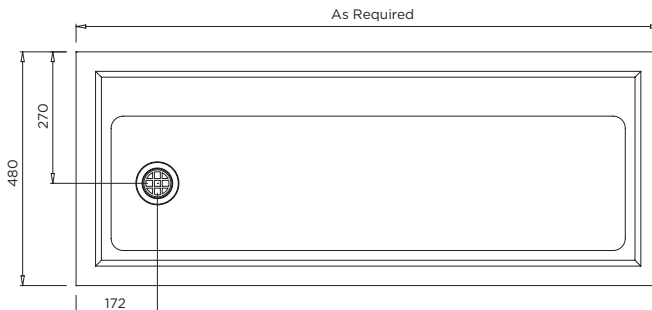
Inset style (600mm wide)



MODEL TP8-F Section

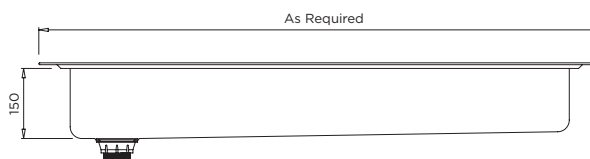
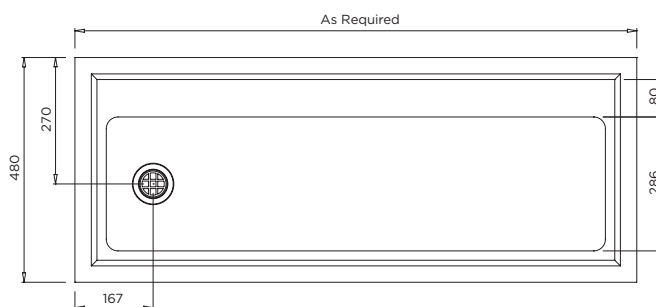


MODEL TP8-I Section



Troughs over 2000mm long are supplied with a centre support bracket

MODEL TP8-F Plan and Front Elevation



MODEL TP8-I Plan and Front Elevation

When specifying this product please include:

- Product **Name** and **Code**
- Product **Dimensions**
- **Tapware** details (if required)
- Position of **Waste Outlet** (left/right)

specifying guide

options

- Tapware - see Tapware Section: 11
- Tap Holes
- Custom lengths
- Inset or Fascia styles
- 480mm or 600mm widths
- Legs with Fascia style
- Left or right hand waste outlet

VISIT [BRITEX.COM.AU](http://BRITEX.COM.AU) TO DOWNLOAD BIM FILES, CAD DRAWINGS AND THE MOST CURRENT PRODUCT LITERATURE.

Last Revised May 2023 | Revision B