

Pattern Trough No.4

TP4



Scan QR code to view our installation notes

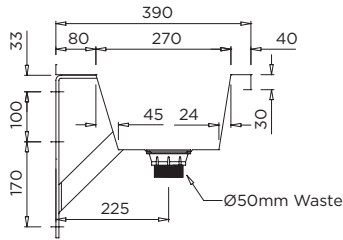


Product Info:

- Economy model with hob for tapware
- Made to custom lengths
- Commercial grade 304 S.S.
- Wall brackets and 50mm waste supplied

To order this item please advise:

- Trough length
- Waste position – Left or Right
- Tap quantity and code (if required)



INSTALLATION NOTES

1) Fixture strength is ultimately determined by the load capacity of the supporting structure (noggins recommended for stud wall construction) and use of appropriate fixings (i.e. sleeve anchors for masonry walls). 2) Trough is mounted to wall via two end brackets (inserted into end fascias of trough). 3) A centre bracket that supports the underside of the fixture is supplied for troughs over 2000mm. 4) To further secure the trough to the rear wall and to prevent shifting of the brackets once screws have been tightened, an adhesive tape or silicon can be applied to the rear tile flange and to the underside of the end fascia where it is in contact with the bracket. 5) Screw holes may also be drilled in the rear tile flange if desired. 6) Front support legs supplied only by specific request.

Suggested Tapware:

(see Tapware Section: 11 for complete range of options)



TW-9101
Eco Timed Flow Pillar Tap



TW-9201
Deluxe Timed Flow Tap



TW-SET-02
Basin Mounted Tap Set



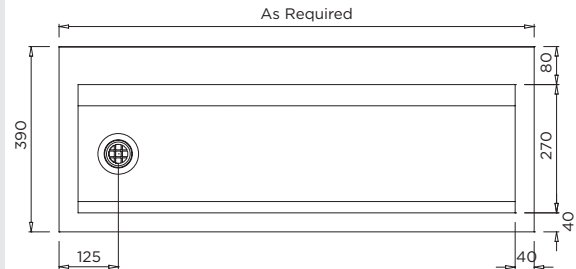
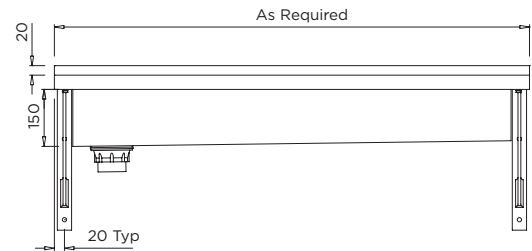
TW-MIX-01
Basin Mounted Flick Mixer



TW-0020
Vandal Resistant DPW (NSW) Deluxe Pillar Tap



TW-9110
Euro Basin Mounted Sensor Tap



Troughs over 2000mm long are supplied with a centre support bracket